



GMT MONTHLY MEMBERSHIP PROGRESS REPORT

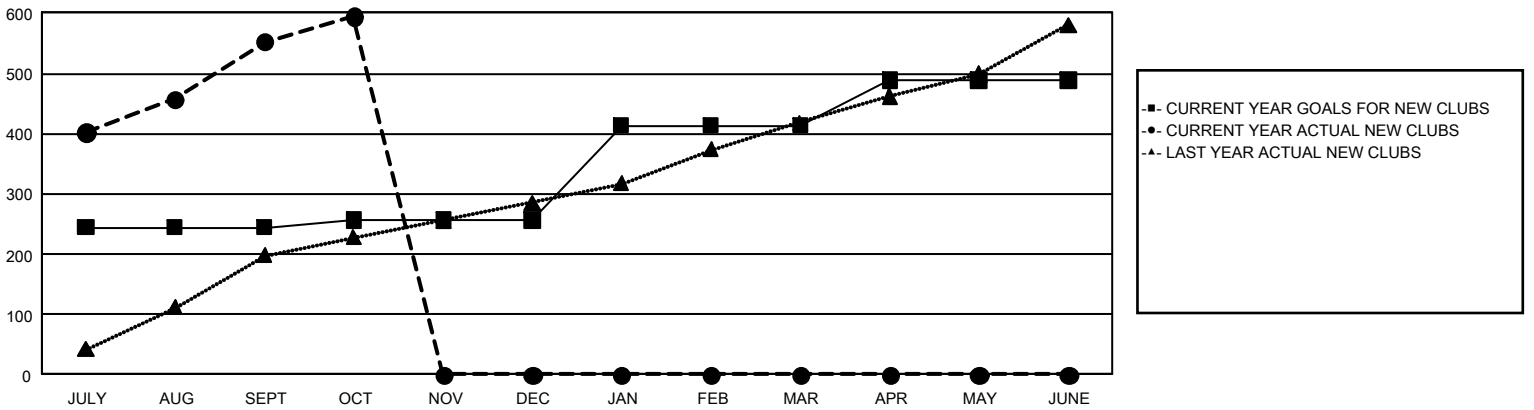
GAT Constitutional Area 6 - India

Results as of: 10/31/2025

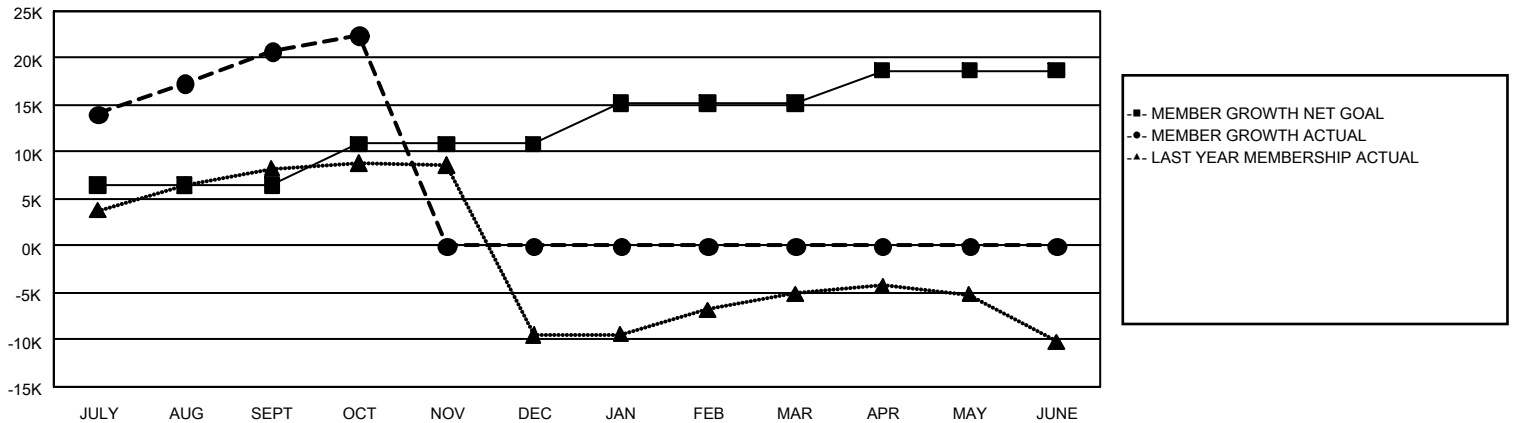
REPORT DOES NOT INCLUDE CLUBS IN UNDISTRICTED AREAS.

Clubs				Members			
RESULTS FOR 2025-2026				RESULTS FOR 2025-2026			
QUARTER	NEW CLUB GOAL	NEW CLUBS	DROPPED CLUBS	QUARTER	MEMBER GROWTH NET GOAL	MEMBER GROWTH ACTUAL	DROPPED MEMBERS ACTUAL (including transfers)
JULY/AUG/SEPT	244	553	106	JULY/AUG/SEPT	6,424	31,466	8,520
OCT/NOV/DEC	12	42	12	OCT/NOV/DEC	4,410	3,371	1,475
JAN/FEB/MAR	157	0	0	JAN/FEB/MAR	4,362	0	0
APR/MAY/JUNE	76	0	0	APR/MAY/JUNE	3,485	0	0

GOALS AND ACTUAL NEW CLUBS CUMULATIVE



GOALS AND ACTUAL MEMBERS CUMULATIVE



DROPPED CLUBS: 118

4,553 CLUBS OF 9,125 ADDED 1 OR MORE NEW MEMBERS

GENDER DISTRIBUTION

MALE 221,206 (73.55%)
FEMALE 79,496 (26.43%)

DROPPED MEMBERS

DECEASED	253
CLUB CANCELLED	1,985
OTHER	7,696
TOTAL	9,934

[CLICK HERE FOR CUMULATIVE MEMBERSHIP DATA](#)

TOTAL FAMILY UNIT MEMBERS	102,917
FAMILY MEMBERS PAYING HALF DUES	60,543